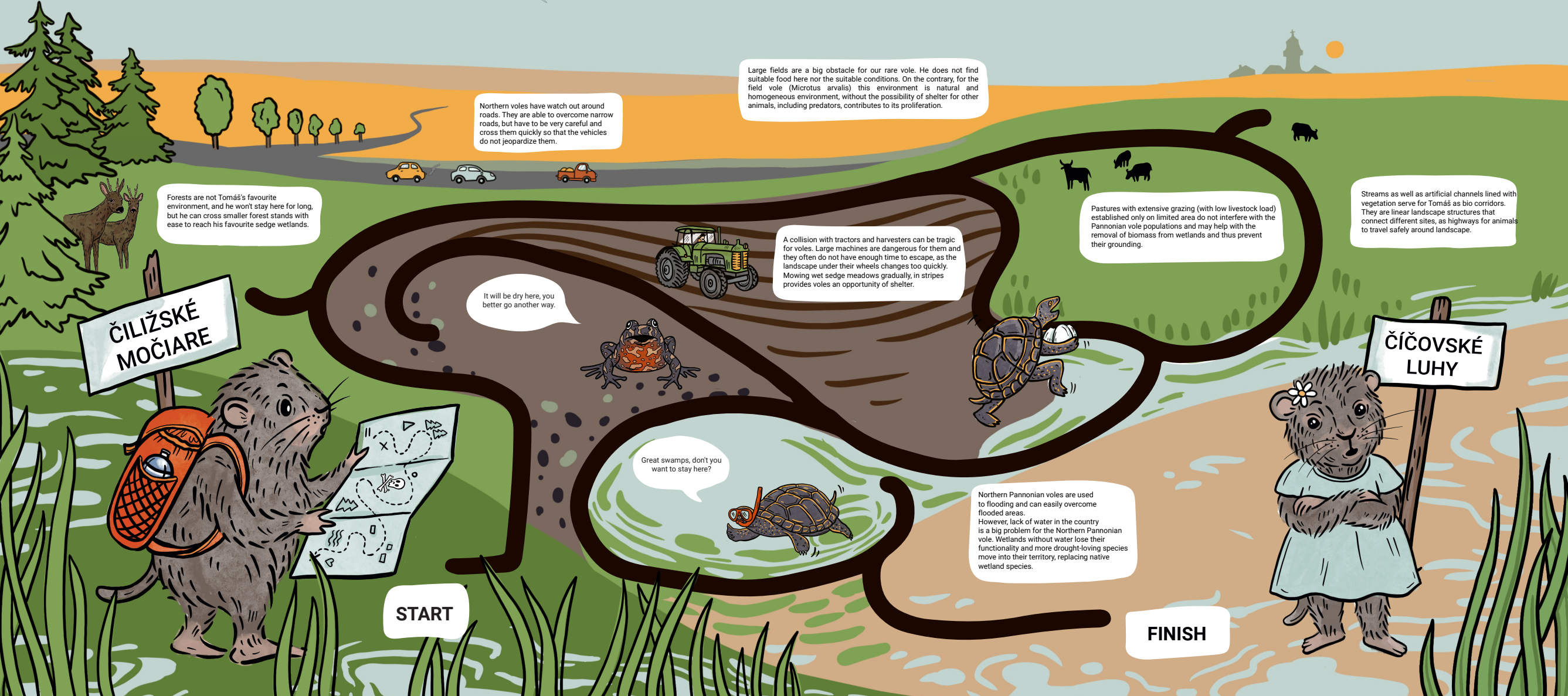


Help Tomáš the vole find a safe way from the Čiližské močiare to his friend Katka in the Čičovské luhy.

Along the way, watch out for traps that may befall him. Maybe you will be able to meet some of his friends who will give you advice on the way..

The vole Tomáš belongs to the rare subspecies of Northern Pannonian vole (*Microtus oeconomus mehelyi*). They live only in a very small area - in the south-west of Slovakia, around Lake Neusiedl in Austria, in the north-west of Hungary and near Balaton. They are very inconspicuous and can be found only in wetlands with sedges and reeds, which form the main component of its food and nest-building material. They are excellent swimmers and really appreciate natural dynamics of the water -the water level in the wetland fluctuating throughout the year.



Forests are not Tomáš's favourite environment, and he won't stay here for long, but he can cross smaller forest stands with ease to reach his favourite sedge wetlands.

Northern voles have watch out around roads. They are able to overcome narrow roads, but have to be very careful and cross them quickly so that the vehicles do not jeopardize them.

Large fields are a big obstacle for our rare vole. He does not find suitable food here nor the suitable conditions. On the contrary, for the field vole (*Microtus arvalis*) this environment is natural and homogeneous environment, without the possibility of shelter for other animals, including predators, contributes to its proliferation.

A collision with tractors and harvesters can be tragic for voles. Large machines are dangerous for them and they often do not have enough time to escape, as the landscape under their wheels changes too quickly. Mowing wet sedge meadows gradually, in stripes provides voles an opportunity of shelter.

Pastures with extensive grazing (with low livestock load) established only on limited area do not interfere with the Pannonian vole populations and may help with the removal of biomass from wetlands and thus prevent their grounding.

Streams as well as artificial channels lined with vegetation serve for Tomáš as bio corridors. They are linear landscape structures that connect different sites, as highways for animals to travel safely around landscape.

It will be dry here, you better go another way.

Great swamps, don't you want to stay here?

Northern Pannonian voles are used to flooding and can easily overcome flooded areas. However, lack of water in the country is a big problem for the Northern Pannonian vole. Wetlands without water lose their functionality and more drought-loving species move into their territory, replacing native wetland species.

ČILIŽSKÉ MOČIARE

ČIČOVSKÉ LUHY

START

FINISH